



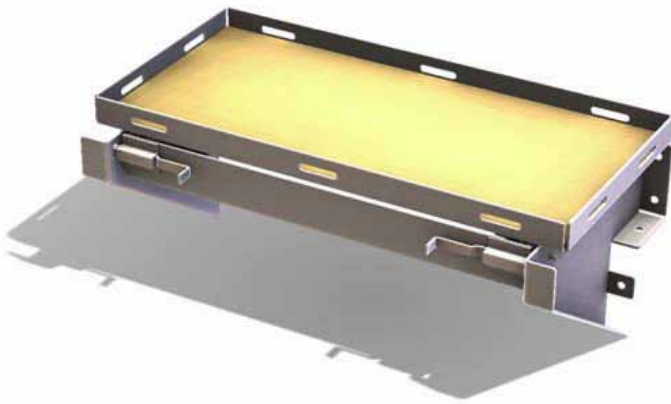
PART NUMBER	FRONT COMPARTMENT LENGTH	FRONT COMPARTMENT DEPTH	TYPE OF MOUNT	TRAY DIMENSIONS
TBT1	35"	20"	FLOOR	27 1/2" X 17 1/2"
TBT2	34"	20"	FLOOR	26 1/2" X 17 1/2"
TBT3	34"	14 1/2"	FLOOR	26 1/2" X 12"
TBT4	32"	20"	OFFSET	24 1/2" X 17 1/2"
TBT5	32"	14 1/2"	OFFSET	24 1/2" X 12"
TBT6	34"	22"	FLOOR	26 1/2" X 19 1/2"
INSTTBT	INSTALL TOOL BOX TRAY			

Standard Specifications

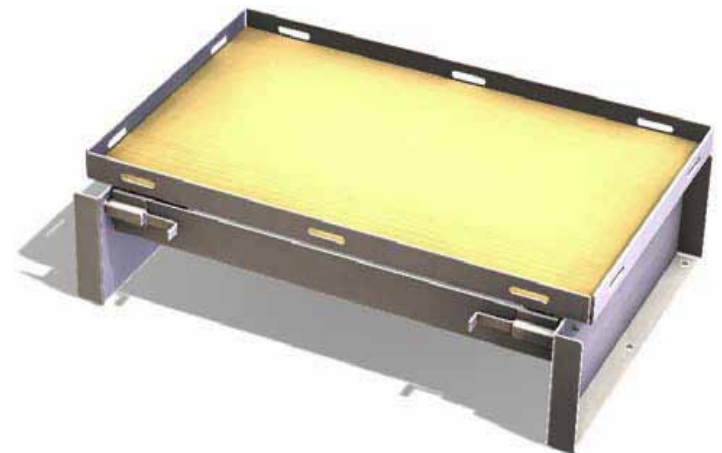
- 10 gauge hot rolled steel construction.
- Full extension drawer slides.
- Plywood lined tray bottom.
- Slots in tray allow for equipment tie-downs.
- Floor mount allows for open space on either side.
- Epoxy primer for customer finish.
- 250 lb. capacity
- Standard RKI lifetime warranty



TBT1 with full slide extension.



TBT5 with offset mount



TBT1 with floor mount